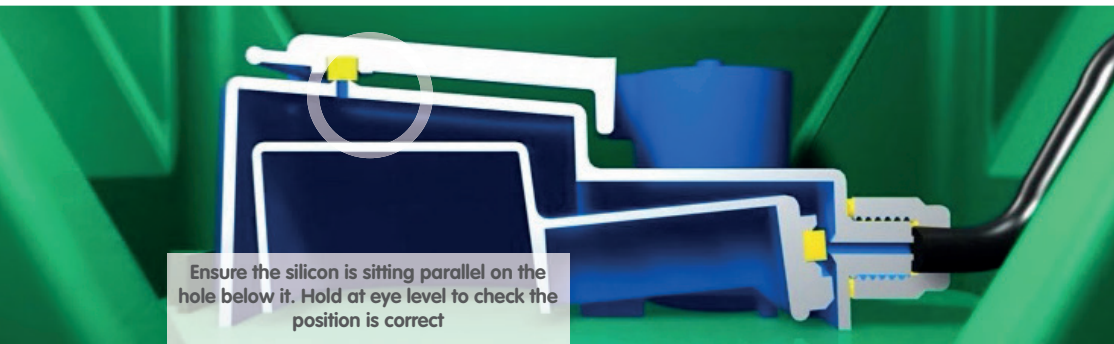


Your complete plant production facility



Ensure the silicon is sitting parallel on the hole below it. Hold at eye level to check the position is correct

Ensuring that the AQUAvalve floods and drains correctly

- 1 Making sure your AQUAvalve floods and drains correctly is simply achieved and only takes a few seconds.
- 2 Hold the AQUAvalve at eye level so that you can see the silicon fitted to the top float resting on the hole below it.
- 3 The silicon must create a tight seal when touching the hole.
- 4 If it looks like it is not sitting parallel on the hole below, simply lift the top float and apply pressure to one side of the silicon, drop the float and hold at eye level again. Repeat the procedure if necessary.

Care and maintenance

- 1 At the end of your growing season, clean the AQUAvalve using warm soapy water. Using an old tooth brush will help.

The AQUAvalve is easily disassembled. The top float will slide all the way across and the bottom float is unclipped from its pivoting position. The circular discs fitted to the top float can also be removed by using pliers to grip the raised point.

At this point it is advisable to remove the silicones to avoid them being lost.
- 2 It is also handy to have a paper clip or pipe cleaner to hand so that you can push it through the AQUAvalve nozzle, this will remove any lime scale build up that may have occurred during the growing season.

Blowing through the AQUAvalve nozzle will also help to remove any build up. Do not under any circumstances use a drill & drill bit to clear the AQUAvalve nozzle.

This will potentially damage the AQUAvalve beyond repair.



Contents



easy2Propagate Complete Kit

- 1x Clear easy2Propagate Lid with 4 x Fitted Vents
- 1x 6.6 Gallon FlexiTank
- 1x 1/2" - 1/4" Click-Fit Adaptor and Filter
- 1x AQUAvalve
- 1x AQUAvalve Cover
- 5' of 1/4" Piping
- 1x 47" x 21.5" Garden Tray
- 2x Coco Matting 23" x 20" x 1.2"
- 1x Root Control Sheet 46" x 20"

easy2Propagate Extension Kit

- 1x Clear easy2Propagate Lid with 4 x Fitted Vents
- 1x AQUAvalve
- 1x 1/2" - 1/4" Tee Connector
- 1x 1/4" Tee Converter
- 3.3' of 1/4" Piping
- 1x 47" x 21.5" Garden Tray
- 2x Coco Matting 23" x 20" x 1.2"
- 1x Root Control Sheet 46" x 20"

easy2Propagate Basic Kit

- 1x Clear easy2Propagate Lid with 4 x Fitted Vents
- 1x 47" x 21.5" Garden Tray
- 2x Coco Matting 23" x 20" x 1.2"
- 1x Root Control Sheet 46" x 20"

easy2Propagate Lid Only

- 1x Clear easy2Propagate Lid with 4 x Fitted Vents
(Fits 47" x 21.5" Garden Tray – not included Lid Only option)

Preparation

- When using CocoMats please note that they should be treated before use. Place the CocoMat in pH 4.5 water and keep fully submerged to soak for 24-48hrs. Then rinse and use with pH 5.5 water.
- Submerge the root control sheet in water for 30 minutes.
- To ensure that your plants receive full levels of light remove protective film from easy2Propagate Lid

Using easy2Propagate without AQUAvalve (Basic Kit)

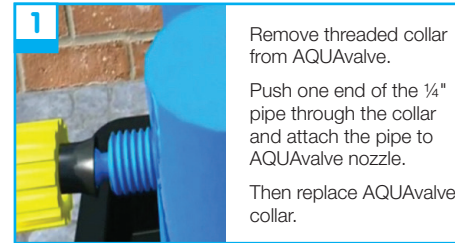
- Place the CocoMat in the Garden Tray. Place the root control sheet on top of the CocoMat – gold face up.
- Now place small pots or seed trays on the surface of the root control sheet. Ensure that the pots / seed tray is flat based and allows the growing media to make contact with the surface of the root control sheet.
- Water through each seed cell or pot once from the top to ensure that the capillary action starts between the surface of the root control sheet and the media at the bottom of the pot.
- Pour water into the tray until the CocoMat is 2/3 submerged.
- Place easy2Propagate Lid onto tray ensuring all corners are fitted snugly.

Using easy2Propagate with AQUAvalve (Complete and Extension Kit)

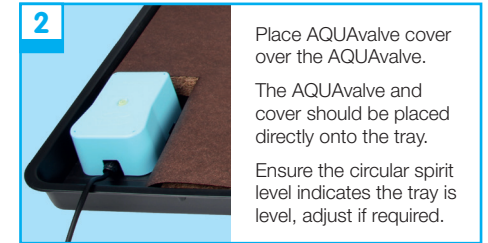
- AQUAvalve is only supplied with easy2Propagate 'Complete' and 'Extension' Kits
- Cut a section out of one corner of the CocoMat using heavy duty scissors, this is to allow a space for the AQUAvalve and AQUAvalve cover to sit on the Garden Tray.
- Cut a section out of the root control sheet to allow access to the AQUAvalve and AQUAvalve cover.
- Place the CocoMat in the tray, place the root control sheet on top of the CocoMat – gold face up.
- Place the AQUAvalve and AQUAvalve cover on the surface of the tray in the space that you have cut out.
- Now place small pots or seed trays on the surface of the root control sheet. Ensure that the pots / seed tray is flat based and allows the growing media to make contact with the surface of the root control sheet.
- Water through each seed cell or pot once from the top to ensure that the capillary action starts between the surface of the root control sheet and the media at the bottom of the pot.
- Now connect your AQUAvalve to your reservoir, fill the reservoir with water and add nutrients, if required.
- Place easy2Propagate Lid onto tray ensuring all corners are fitted snugly.

- ⚠ Remember that young plants need less food than established ones.
Do not connect your easy2Propagate to an AutoPot Watering System that is also feeding established plants.

Setting Up the AQUAvalve



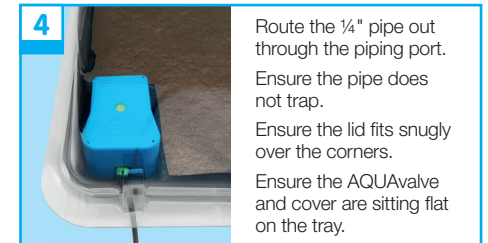
- 1** Remove threaded collar from AQUAvalve.
Push one end of the 1/4" pipe through the collar and attach the pipe to AQUAvalve nozzle.
Then replace AQUAvalve collar.



- 2** Place AQUAvalve cover over the AQUAvalve.
The AQUAvalve and cover should be placed directly onto the tray.
Ensure the circular spirit level indicates the tray is level, adjust if required.



- 3** Cut 1/4" pipe to appropriate length if required.



- 4** Route the 1/4" pipe out through the piping port.
Ensure the pipe does not trap.
Ensure the lid fits snugly over the corners.
Ensure the AQUAvalve and cover are sitting flat on the tray.



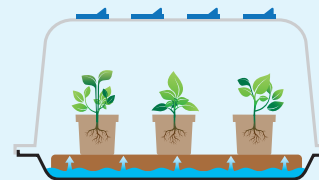
- 5** Connect to your system using 1/2" or 1/4" fittings



- 6** To connect to the FlexiTank push 1/2" - 1/4" Click-Fit Adapter and Filter onto the 1/4" pipe.
Then push the Click-Fit Adapter and Filter onto the FlexiTank tap.

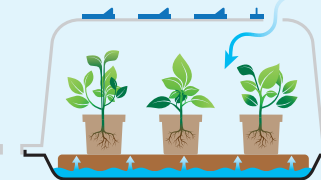
Propagation Tips

Close vents to generate temperature and humidity



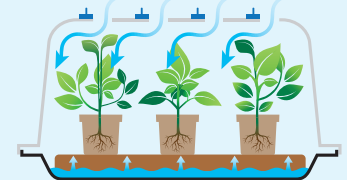
- Use heat pads under the tray or propagation lights above it to warm the water and create humidity.

When to begin opening the vents



- Once the seedlings or cuttings have rooted you can begin to gradually open the vents.

Hardening off



- Once the vents are fully opened leave for several days prior to removing the lid.



Tips

1. We recommend a target temperature of 70-80°F / 25-30°C with minimum 80% humidity.

2. If you are using raised pots, such as terracotta pots or bonsai pots, a small length of capillary matting (not included) can be cut and pushed inside the hole at the bottom of the raised pot. The capillary matting will act as a wick.