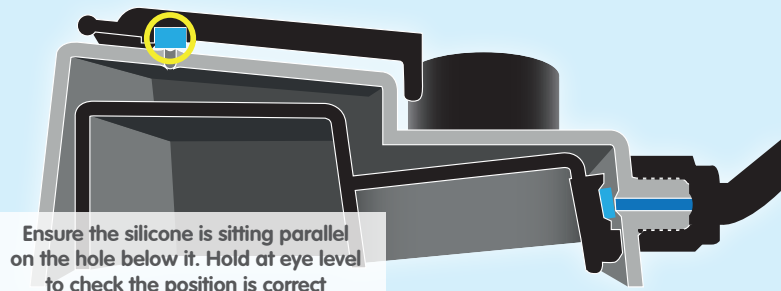


Your complete plant production facility



Ensure the silicone is sitting parallel on the hole below it. Hold at eye level to check the position is correct

### Ensuring that the AQUAvalve5 floods and drains correctly

- 1 Making sure your AQUAvalve5 floods and drains correctly is simply achieved and only takes a few seconds.
- 2 Hold the AQUAvalve5 at eye level so that you can see the silicone fitted to the top float resting on the hole below it.
- 3 The silicone must create a tight seal when touching the hole.
- 4 If it looks like it is not sitting parallel on the hole below, simply lift the top float and apply pressure to one side of the silicone, drop the float and hold at eye level again. Repeat the procedure if necessary.

### Care and maintenance

- 1 At the end of your growing season, clean the AQUAvalve5 using warm soapy water. Using an old tooth brush will help.  
  
The AQUAvalve5 is easily disassembled. The top float will slide all the way across and the bottom float is unclipped from its pivoting position. The circular discs fitted to the top float can also be removed by using pliers to grip the raised point.  
  
At this point it is advisable to remove the silicones to avoid them being lost.
- 2 It is also handy to have a paper clip or pipe cleaner to hand so that you can push it through the AQUAvalve5 nozzle, this will remove any lime scale build up that may have occurred during the growing season.  
  
Blowing through the AQUAvalve5 nozzle will also help to remove any build up. Do not under any circumstances use a drill & drill bit to clear the AQUAvalve5 nozzle.  
  
**This will potentially damage the AQUAvalve5 beyond repair.**



easy2Propagate Lid

easy2Propagate Basic Kit

easy2Propagate Extension Kit

easy2Propagate Complete Kit

## Contents



### easy2Propagate Complete Kit

- 1x Clear easy2Propagate Lid with 4 x Fitted Vents
- 1x 6.6 Gallon FlexiTank
- 1x 1/2" - 3/8" Click-Fit Adaptor and Filter
- 1x AQUAvalve5
- 1x AQUAvalve5 Cover
- 1x 3/8" Elbow Bar
- 5' of 3/8" Piping
- 1x 47" x 21.5" Garden Tray
- 2x Coco Matting 23" x 20" x 1.2"
- 1x Root Control Sheet 46" x 20"

### easy2Propagate Extension Kit

- 1x Clear easy2Propagate Lid with 4 x Fitted Vents
- 1x AQUAvalve5
- 1x AQUAvalve5 Cover
- 1x 3/8" Elbow Bar
- 1x 1/2" - 3/8" Tee Connector
- 1x 3/8" Tee Converter
- 3.3' of 3/8" Piping
- 1x 47" x 21.5" Garden Tray
- 2x Coco Matting 23" x 20" x 1.2"
- 1x Root Control Sheet 46" x 20"

### easy2Propagate Basic Kit

- 1x Clear easy2Propagate Lid with 4 x Fitted Vents
- 1x 47" x 21.5" Garden Tray
- 2x Coco Matting 23" x 20" x 1.2"
- 1x Root Control Sheet 46" x 20"

### easy2Propagate Lid Only

- 1x Clear easy2Propagate Lid with 4 x Fitted Vents  
(Fits 47" x 21.5" Garden Tray – not included Lid Only option)

## Preparation

- When using CocoMats please note that they should be treated before use. Place the CocoMat in pH 4.5 water and keep fully submerged to soak for 24-48hrs. Then rinse and use with pH 5.5 water.
- Submerge the root control sheet in water for 30 minutes.
- To ensure that your plants receive full levels of light remove protective film from easy2Propagate Lid

## Using easy2Propagate without AQUAvalve5 (Basic Kit)

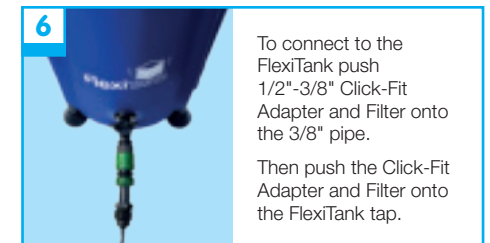
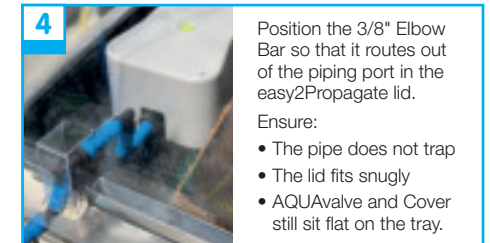
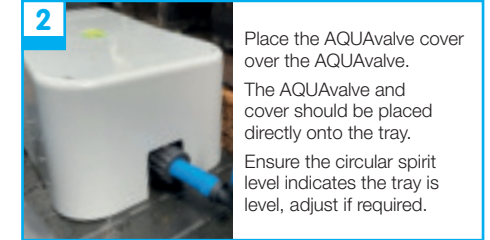
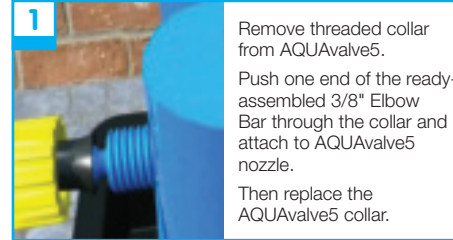
- Place the CocoMat in the Garden Tray. Place the root control sheet on top of the CocoMat – gold face up.
- Now place small pots or seed trays on the surface of the root control sheet. Ensure that the pots / seed tray is flat based and allows the growing media to make contact with the surface of the root control sheet.
- Water through each seed cell or pot once from the top to ensure that the capillary action starts between the surface of the root control sheet and the media at the bottom of the pot.
- Pour water into the tray until the CocoMat is 2/3 submerged.
- Place easy2Propagate Lid onto tray ensuring all corners are fitted snugly.

## Using easy2Propagate with AQUAvalve5 (Complete and Extension Kit)

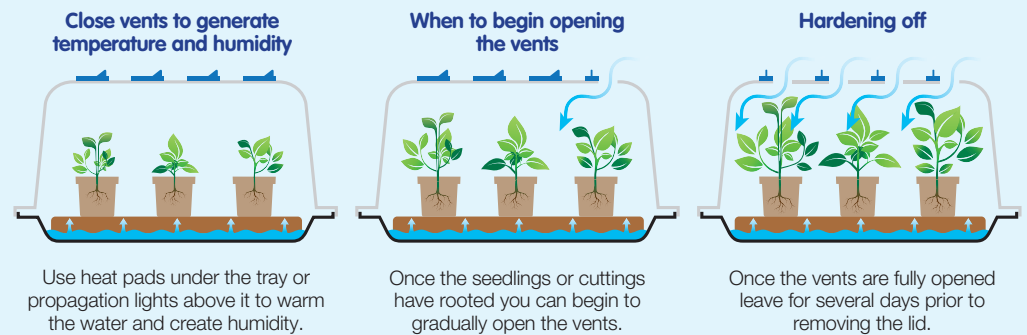
- AQUAvalve5 is only supplied with easy2Propagate 'Complete' and 'Extension' Kits
- Cut a section out of one corner of the CocoMat using heavy duty scissors, this is to allow a space for the AQUAvalve5 and AQUAvalve5 cover to sit on the Garden Tray.
- Cut a section out of the root control sheet to allow access to the AQUAvalve5 and AQUAvalve5 cover.
- Place the CocoMat in the tray, place the root control sheet on top of the CocoMat – gold face up.
- Place the AQUAvalve5 and AQUAvalve5 cover on the surface of the tray in the space that you have cut out.
- Now place small pots or seed trays on the surface of the root control sheet. Ensure that the pots / seed tray is flat based and allows the growing media to make contact with the surface of the root control sheet.
- Water through each seed cell or pot once from the top to ensure that the capillary action starts between the surface of the root control sheet and the media at the bottom of the pot.
- Now connect your AQUAvalve5 to your reservoir, fill the reservoir with water and add nutrients, if required.
- Place easy2Propagate Lid onto tray ensuring all corners are fitted snugly.

- ⚠ Remember that young plants need less food than established ones.  
Do not connect your easy2Propagate to an AutoPot Watering System that is also feeding established plants.

## Setting Up the AQUAvalve5



## Propagation Tips



## Tips

1. We recommend a target temperature of 70-80°F / 25-30°C with minimum 80% humidity.
2. If you are using raised pots, such as terracotta pots or bonsai pots, a small length of capillary matting (not included) can be cut and pushed inside the hole at the bottom of the raised pot. The capillary matting will act as a wick.